

# ARCTIKO

The art of simplicity®



Product Brochure **2016**

## BIOMEDICAL FREEZERS AND REFRIGERATION

ULTRA LOW FREEZERS - LABORATORY, PHARMACEUTICAL AND MEDICAL REFRIGERATION

# Scandinavian design the art of simplicity

Arctiko is probably the most innovative cold chain manufacturer in the world. We have an absolute passion for what we do.

Our aim is to use technological foresight to create products that are competitive in quality and price. We have experienced tremendous growth in the last few years thanks to our pursuit of best solutions as well as our easy and accessible servicing. We are confident that success is due to our concepts and ways of working.

We enjoy making a difference, not only with single compressor technology, but also with our dedication to creating the best for our customers and the environment. We now have one of the largest ranges of freezers in the world with the lowest energy consumption.

Arctiko is the art of simplicity, because creating solutions for you is that simple.



When engineering new technologies here at Arctiko, we have the customer in mind. The large temperature display and most user-friendly controls on the market show that once again Arctiko has managed to turn simplicity into an art. Arctiko has the smartest controller available with every possible alarm feature, integrated data logger, contact for remote alarm, RS485/RS232 interface and USB read out. Naturally, all these features are standard on our units produced with the Arctiko controller.

Today the Arctiko controller is not only the premium of controllers worldwide, but has an upload function. This means that when Arctiko makes a software update or adds additional features, you can update your unit on site. We call this a commitment to our partners and end users, and it means that your unit will always be up to date.



### Data logging features

- Integrated data logger
- RS485/RS232 Interface
- Integrated memory for 30 years



### Features

- Micro processor controller with digital display
- Approx. 72 hours battery back up for alarms, loggings and temperature display in case of power cut
- Prepared for GSM alarm
- Prepared for connection of 2 additional probes
- Auto cycle in case of probe failure
- Ambient temperature display
- Direct download of logged data on USB memory stick
- Direct upload of new software via USB memory stick
- 3-level password-protected
- Battery level indication
- Display text available in different languages
- Temperature graph



### Alarm features

- Visual and acoustic alarm
- Adjustable high/low temperature alarm
- Power failure alarm
- Probe failure alarm
- Instrument failure alarm
- Open door alarm
- Contact for remote alarm
- Shows all alarms



-150°C

## Cryogenic freezers

# ARCTIKO

The art of simplicity®

The cryogenic freezers offer a wide variety of research and longterm storage applications for low temperature scientific experiments, preservation of cells, DNA, bone material, bacteria, etc. With its extreme cooling precision and superior features, the CRYO range is the perfect choice for testing special material, ideal for hospitals, university laboratories, military industry or sanitation stations.



Model	CRYO 170	CRYO 230
Dimensions exterior WxDxH (mm)	1420x960x1090	1600x960x1090
Capacity (L)	169	230
Temperature range (°C)	-150/-140	-150/-140
Power supply (V)	3x400	3x400
Frequency (Hz)	50/60	50/60

We reserve the right to change specifications without notice.  
Subject to confirmation, availability and errors.

Low  
energy  
consump-  
tion

### Features on Cryo 170/230

- Dual cooling system for double security
- Digital display
- Extremely low noise level
- Low energy consumption
- Visual and acoustic alarm
- High and low temperature alarm
- Power failure alarm
- Contact for remote alarm
- Temperature chart recorder
- Battery back up
- Porthole for external temperature probe
- 100 % CFC / HCFC free
- LN2 back up (optional)

-90°C

## Ultra low temperature upright freezers – double security

Thanks to the superior single compressor system used in the entire Arctiko ULUF range, in the event of any failure with one of the refrigeration systems, the other system will still maintain the temperature at -86°C. Thus your samples will not be affected by any challenge caused by an unexpected failure until service is provided.



ULUF 890



ULUF 490

NEW!  
Optimized  
cooling system  
and lower  
energy  
consumption

### Features on ULUF 490/890

- Dual independent cooling system
- Direct cooling for higher temperature uniformity
- Excellent temperature stability
- Filterless construction
- Low energy consumption
- Low noise level
- Low heat dissipation
- Insulated inner doors
- Ergonomical correct height of cabinets
- Heated door frame for easy door opening
- Controller with various language settings
- Heated vacuum valve
- Key lock on door
- 100 % HCFC / CFC free
- Castors

Dual  
independent  
cooling  
system

Reaching  
-90°C in  
3 hours !

Model	ULUF 490	ULUF 590	ULUF 890
Dimensions exterior WxDxH (mm)	720x885x2089	920x885x1990	1492x885x2089
Capacity (L)	393	556	393/393
Temperature range (°C)	-90/-40	-90/-40	-90/-40
Power supply (V)	230	230	230
Frequency (Hz)	50/60	50/60	50/60

We reserve the right to change specifications without notice. Subject to confirmation, availability and errors.

We are passionate about the products in our ULUF -86°C range that offer the best in ultra-low temperature freezing. Once again, we have set new standards with the most user-friendly controller on the market. All features such as alarms and data logging functions are always included as standard. Models in the range start from a volume of 7 litres all the way up to 826 litres. The ULUF range are now also available with an exterior height of only two meters to facilitate installation. The ULUF -86°C series is produced with the true and original single compressor technology and offers the greatest temperature stability worldwide!



ULUF 15



ULUF 65

Model	ULUF 15	ULUF 65	ULUF 125
Dimensions exterior WxDxH (mm)	400x630x665	600x700x810	950x725x810
Net. Capacity (L)	7	54	94
Temperature range (°C)	-90/-40	-86/-40	-86/-40
Power supply (V)	230	230	230
Frequency (Hz)	50/60	50/60	50/60

We reserve the right to change specifications without notice.  
Subject to confirmation, availability and errors.

### Features on ULUF -86°C range

- Single compressor technology
- Direct cooling for higher temperature uniformity
- Excellent temperature stability
- Filterless construction
- Low energy consumption
- Low noise level
- Low heat dissipation
- Insulated inner doors
- Ergonomical correct height of cabinets
- Heated door frame for easy door opening
- Controller with various language settings
- Heated vacuum valve
- Key lock on door
- 100 % HCFC / CFC free
- Castors



ULUF 125



ULUF 850 / ULUF 850-2M



ULUF 550

**NEW!**  
Optimized  
cooling system  
and lower  
energy  
consumption

Single  
compressor  
technology

Model	ULUF 450	ULUF 450-2M	ULUF 550	ULUF 550-2M	ULUF 750	ULUF 750-2M	ULUF 850	ULUF 850-2M
Dimensions exterior WxDxH (mm)	720x885x2089	720x885x1990	920x885x2089	920x885x1990	1030x885x2089	1030x885x1990	1492x885x2089	1492x885x1990
Net. Capacity (L)	413	393	585	556	680	642	413/413	393/393
Temperature range (°C)	-86/-40	-86/-40	-86/-40	-86/-40	-86/-40	-86/-40	-86/-40	-86/-40
Power supply (V)	230	230	230	230	230	230	230	230
Frequency (Hz)	50/60	50/60	50/60	50/60	50/60	50/60	50/60	50/60

We reserve the right to change specifications without notice. Subject to confirmation, availability and errors.

-86°C

## Ultra low temperature chest freezers

**ARCTIKO**

The art of simplicity®

The ULTF range shows that high performance freezing with focus on low energy consumption is the future. The range has been updated with our advanced Arctiko controller which ensures that all alarm and data logging features are included as standard. The ULTF range is produced with the true and original single compressor technology which ensures the lowest noise level available.



ULTF 420

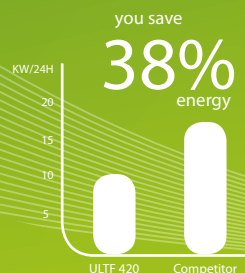
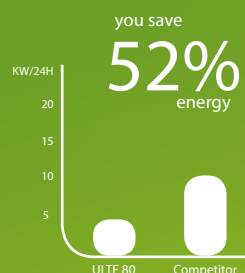
ULTF 320

ULTF 80

**NEW!**  
Optimized  
cooling system  
and lower  
energy  
consumption

### Features on ULTF range

- ARCTIKO Controller G214
- Single compressor
- Low energy consumption
- Low noise level (<50dBa)
- Low heat dissipation
- 100% HCFC/CFC free
- Sub lids
- Key lock on lid
- Porthole for external temperature probes (12mm)
- Contact for remote alarm
- Filterless construction



Model	ULTF 80	ULTF 220	ULTF 320	ULTF 420
Dimensions exterior WxDxH (mm)	552x648x850	920x695x885	1262x698x885	1562x698x885
Capacity (L)	71	189	284	368
Temperature range (°C)	-86/-40	-86/-40	-86/-40	-86/-40
Power supply (V)	230	230	230	230
Frequency (Hz)	50/60	50/60	50/60	50/60

We reserve the right to change specifications without notice. Subject to confirmation, availability and errors.

-80°C

## Bench top freezer



MUF 40

The MUF 40 can be used as either a bench-top or undercounter model. The compact design and low noise level make it a perfect storage solution in your laboratory.

VIP  
panels



### MUF 40

- Single compressor
- Low energy consumption
- Low noise level
- Low heat dissipation
- Key lock on door
- Shelf
- Feet
- VIP panels
- Door key lock
- Porthole for external probe

Model	MUF 40
Dimensions exterior WxDxH (mm)	495x660x680
Capacity (L)	35
Temperature range (°C)	-80/-60
Power supply (V)	230
Frequency (Hz)	50/60

We reserve the right to change specifications without notice. Subject to confirmation, availability and errors.



LTF 535 /  
LTFE 515

LTF 325 /  
LTFE 290

LTF 85

As a synonym for security, the LTF (-60°C) and LTFE (-45°C) range ensure reliable low temperature freezing and high temperature uniformity. Standard features include digital display, alarms, contact for remote alarm and castors.

### LTF/LTFE range

- Single compressor
- Low energy consumption
- Low noise level
- 100% HCFC/CFC free
- Key lock and baskets
- Eco friendly refrigerant

Single  
compressor

Low  
energy  
consump-  
tion

Model	LTF 85	LTF 225	LTF 325	LTF 425	LTF 535	LTFE 140	LTFE 290	LTFE 370	LTFE 515
Dimensions exterior WxDxH (mm)	552x648x850	720x695x885	1262x698x885	1562x698x885	1662x758x890	720x695x885	1262x698x885	1562x698x885	1662x758x890
Capacity (L)	71	133	284	368	476	133	284	368	476
Temperature range (°C)	-60/-30	-60/-30	-60/-30	-60/-30	-60/-30	-45/-10	-45/-10	-45/-10	-45/-10
Power supply (V)	230	230	230	230	230	230	230	230	230
Frequency (Hz)	50/60	50/60	50/60	50/60	50/60	50/60	50/60	50/60	50/60

We reserve the right to change specifications without notice. Subject to confirmation, availability and errors.

## Portable -80°C freezer

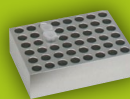
-80°C



DP-80

Keep your eye on what's important. The DP-80, designed for temporary storage, ensures direct access to the samples at your desk. The Cryo Porter is based on Stirling technology that eliminates compressor and refrigerant, making it the most environmentally safe product of its kind.

REMEMBER THE ALUMINUM BLOCK



DPB-1548



DPB-0001

### DP-80 cryo porter

- Aluminium blocks for quick freezing of samples (must be ordered separately)
- Microprocessor controller with digital display
- Simple & easy operation
- Temp. stability +/- 0,2°C
- Safety system for over current and system failure
- AC (230V) and DC (12V) connection cables



Model	DP-80
Dimensions exterior WxDxH (mm)	230x262x390
Capacity (L)	1 alu. block
Temperature range (°C)	-80/0
Power supply (V)	12 Vdc / 110 Vac / 230 Vac
Frequency (Hz)	50/60

We reserve the right to change specifications without notice. Subject to confirmation, availability and errors.

Item code name	Product	Description	Diameter of wells
DAI 1421	DPB-0296:	96 wells for PCR-tubes 0,2 ml	Ø: 0,6 mm
DAI 1422	DPB-0548:	48 wells for PCR-tubes 0,5 ml	Ø: 0,8 mm
DAI 1423	DPB-1548:	48 wells for Sample-tubes 1,5 ml	Ø: 11,0 mm
DAI 1424	DPB-1840:	40 wells for Vials, Cryotubes 1,8 ml	Ø: 12,8 mm
DAI 1425	DPB-2040:	40 wells, Cryotubes 2,0 ml	Ø: 10,8 mm
DAI 1427	DPB-0001:	One large compartment	

-40°C

## Low temperature upright freezers

# ARCTIKO

The art of simplicity®

We are passionate about our products in the ULUF -40°C range, which offer the best in low temperature freezing. Once again, we set new standards with the most user-friendly controller on the market. Alarms and data logging functions are always included as standard. The Arctiko ULUF -40°C range offers the greatest temperature stability worldwide!



ULUF 60



ULUF 120



ULUF 500



ULUF 800

### Features on ULUF -40°C range

- ARCTIKO Controller G214
- Low energy consumption
- Low noise level
- Low heat dissipation
- Insulated inner doors
- Castors and door key lock
- Ergonomic loading
- Heated door frame
- Heated vacuum valve
- 100% HCFC/CFC free
- Porthole for external temperature probes
- Filterless construction

**NEW!**  
Optimized  
cooling system  
and lower  
energy  
consumption

Model	ULUF 60	ULUF 120	ULUF 400	ULUF 500	ULUF 700	ULUF 800
Dimensions exterior WxDxH (mm)	600×700×810	950×725×810	720×885×2089	920×871×2089	1030×885×2089	1492×885×2089
Capacity (L)	54	94	413	585	680	413/413
Temperature range (°C)	-40/-20	-40/-20	-40/-20	-40/-20	-40/-20	-40/-20
Power supply (V)	230	230	230	230	230	230
Frequency (Hz)	50/60	50/60	50/60	50/60	50/60	50/60

We reserve the right to change the specifications without notice. Subject to confirmation, availability and errors.

Our LR/LF range offers high temperature uniformity and stability and is produced with attention to detail as well as user-friendly features. Products are available with different capacities and offer you the best in technology and reliability.



**OPTIONAL SPARK FREE INTERIOR**  
ATEX approved according to EN 60079-15  
category 3, zone 2. CE EX 11-3 G



LF 100 / LR 100



LF 660-2 / LR 660-2

### Features on LF/LR range

- ARCTIKO Controller G214
- White or stainless steel exterior
- Stainless steel interior
- Automatic door closing
- Air forced cooling
- Adjustable shelves
- Castors
- Key lock on door
- Reversible door
- Automatic defrost

Available  
in stainless  
steel



LF 300 / LR 300



LF 1400 / LR 1400

Model	LF 100/LR 100	LR 270-2	LF 300/LR 300	LF 500/LR 500	LF 660-2/LR 660-2	LF 700/LR 700	LAF 700	LF 900/LR 900	LF 1400/LR 1400
Dimensions exterior WxDxH (mm)	610x659x790	520x700x1997	520x700x1997	620x860x1997	720x860x1997	720x860x1997	740x870x2017	1020x860x1997	1440x860x1997
Capacity (L)	94	161/161	346	515	288/288	618	618	866	1361
Temperature range (°C) LF range	-30/-10	-	-30/-10	-30/-10	-30/-10	-30/-10	-40/-10	-30/-10	-30/-10
Temperature range (°C) LR range	+1/+10	+1/+10	+1/+10	+1/+10	+1/+10	+1/+10	-	+1/+10	+1/+10
Power supply (V)	230	161 / 161	230	230	230	230	230	230	230
Frequency (Hz)	50/60	50/60	50/60	50/60	50/60	50/60	50/60	50/60	50/60

We reserve the right to change the specifications without notice. Subject to confirmation, availability and errors.

-30/-10°C  
+1/+10°C

## Biomedical combi fridge/freezers

**ARCTIKO**

The art of simplicity®



LFF 660



**OPTIONAL SPARK FREE INTERIOR**  
ATEX approved according to EN 60079-15  
category 3, zone 2. CE EX 11-/3 G

Available  
in stainless  
steel



### Features on LFF/LFFG range

- ARCTIKO Controller G214
- White or stainless steel exterior
- Stainless steel interior
- Automatic door closing
- Air forced cooling
- Adjustable shelves
- Castors
- Door key lock
- Reversible door
- Automatic defrost

Model	LFF 270	LFF 660	LFFG 270	LFFG 660
Dimensions exterior WxDxH (mm)	520x700x1997	720x860x1997	520x700x1997	720x860x1997
Capacity (L)	161 / 161	288 / 288	161 / 161	288 / 288
Temperature range (°C)	+1/+10 -30/-10	+1/+10 -30/-10	+1/+10 -30/-10	+1/+10 -30/-10
Power supply (V)	230	230	230	230
Frequency (Hz)	50/60	50/60	50/60	50/60

We reserve the right to change the specifications without notice. Subject to confirmation, availability and errors.

-23/-10°C  
+2/+14°C

## Biomedical glass door freezers & Biomedical glass door refrigerator



PF 500 / PR 500

Offering outstanding cooling performance, glass door freezers from Arctiko allow the best overview of the inside of the units. The advanced Arctiko controller ensures reliable temperatures and comes equipped with many alarms as standard.



PF 100 / PR 100



**OPTIONAL SPARK FREE INTERIOR**  
ATEX approved according to EN 60079-15  
category 3, zone 2. CE EX 11-/3 G

### Features on PF/PR range

- ARCTIKO Controller G214
- White or stainless steel exterior
- Stainless steel interior
- Automatic door closing
- Air forced cooling
- Adjustable shelves
- Castors
- Key lock on door
- Reversible door
- Glass door
- LED Light
- Automatic defrost

Model	PF 100/PR 100	PF 300/PR 300	PF 500/PR 500	PF 700/PR 700	PF 900/PR 900	PF 1400/PR 1400
Dimensions exterior WxDxH (mm)	610x659x790	520x690x1997	620x860x1997	720x860x1997	1020x860x1997	1440x860x1997
Capacity (L)	94	352	523	628	878	1381
Temperature range (°C) PF range	-23/-10	-23/-10	-23/-10	-23/-10	-23/-10	-23/-10
Temperature range (°C) PR range	+1/+10	+1/+10	+1/+10	+1/+10	+1/+10	+1/+10
Power supply (V)	230	230	230	230	230	230
Frequency (Hz)	50/60	50/60	50/60	50/60	50/60	50/60

We reserve the right to change the specifications without notice. Subject to confirmation, availability and errors.

The Arctiko BBR range is a perfect combination of unique temperature uniformity and reliable technology. The BBR models come with advanced controller, integrated nonmanipulative data logger with USB read-out and chart recorder as standard.

### Features on BBR/BBR-D range

- Dual refrigeration system (BBR-D models)
- Medical device approved
- Stainless steel interior
- White exterior
- Automatic door closing and key lock
- Air forced cooling
- Telescopic drawers
- Right hand hinged reversible door
- Castors
- Temperature chart recorder
- Key lock on door



BBR 1400/BBR 1400-D



BBR 500/BBR 500-D

ISO 13485:2003  
MEDICAL  
DEVICE  
CLASS IIA



BBR 100 / BBR 100-D



BBR 300/BBR 300-D

Model	BBR 100/BBR 100-D	BBR 300/BBR 300-D	BBR 500/BBR 500-D	BBR 700/BBR 700-D	BBR 1400/BBR 1400-D
Dimensions exterior WxDxH (mm)	610x659x790	520x690x1997	620x860x1997	720x860x1997	1440x860x1997
Capacity (L)	94	352	523	628	1381
Temperature range (°C)	+4	+4	+4	+4	+4
Power supply (V)	230	230	230	230	230
Frequency (Hz)	50/60	50/60	50/60	50/60	50/60
Max. quantity of blood bags with standard no. of drawers	72	160	240	300	600
Max. quantity of blood bags with max. no. of drawers	72	256	384	480	960

# PRODUCT OVERVIEW

-150°	-90°	-86°	-80°	-60°	-45°	-40°	-30°	-23°	+1/+10°	+4°	°C
CRYO 170 CRYO 230	ULUF 15 ULUF 490 ULUF 590 ULUF 890	ULTF 80 ULTF 220 ULTF 320 ULTF 420 ULUF 65 ULUF 125 ULUF 450 ULUF 450-2M ULUF 550 ULUF 550-2M ULUF 750 ULUF 750-2M ULUF 850 ULUF 850-2M	DP 80 MUF 40	LTF 85 LTF 225 LTF 325 LTF 425 LTF 535	LTFE 140 LTFE 290 LTFE 370 LTFE 515	LAF 700 ULUF 60 ULUF 120 ULUF 400 ULUF 500 ULUF 700 ULUF 800	LF 100 LFF 270 LFFG 270 LF 300 LF 500 LFF 660 LFFG 660 LF 660-2 LF 700 LF 900 LF 1400	PF 100 PF 300 PF 500 PF 700 PF 900 PF 1400	LR 100 LR 270-2 LR 300 LR 500 LR 660-2 LR 700 LR 900 LR 1400 PR 100 PR 300 PR 500 PR 700 PR 900 PR 1400	BBR 100 BBR 300 BBR 500 BBR 700 BBR 1400 BBR 100-D BBR 300-D BBR 500-D BBR 700-D BBR 1400-D	

## ACCESSORIES

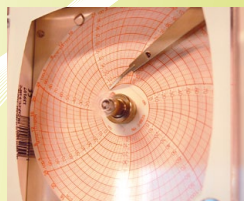


Chart recorder



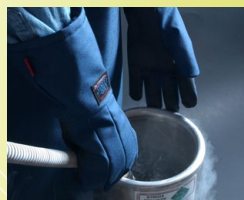
Drawer system



GSM alarm module



CO<sub>2</sub> back up



Cryo gloves



SVS Voltage Stabilizers



Boxes



Racks

# ARCTIKO

The art of simplicity®

Distributor:



www.arctiko.com

Lammefjordsvej 5  
DK-6715 Esbjerg N  
Denmark  
Tel. +45 7020 0328  
Fax. +45 7020 0329  
info@arctiko.com  
www.arctiko.com